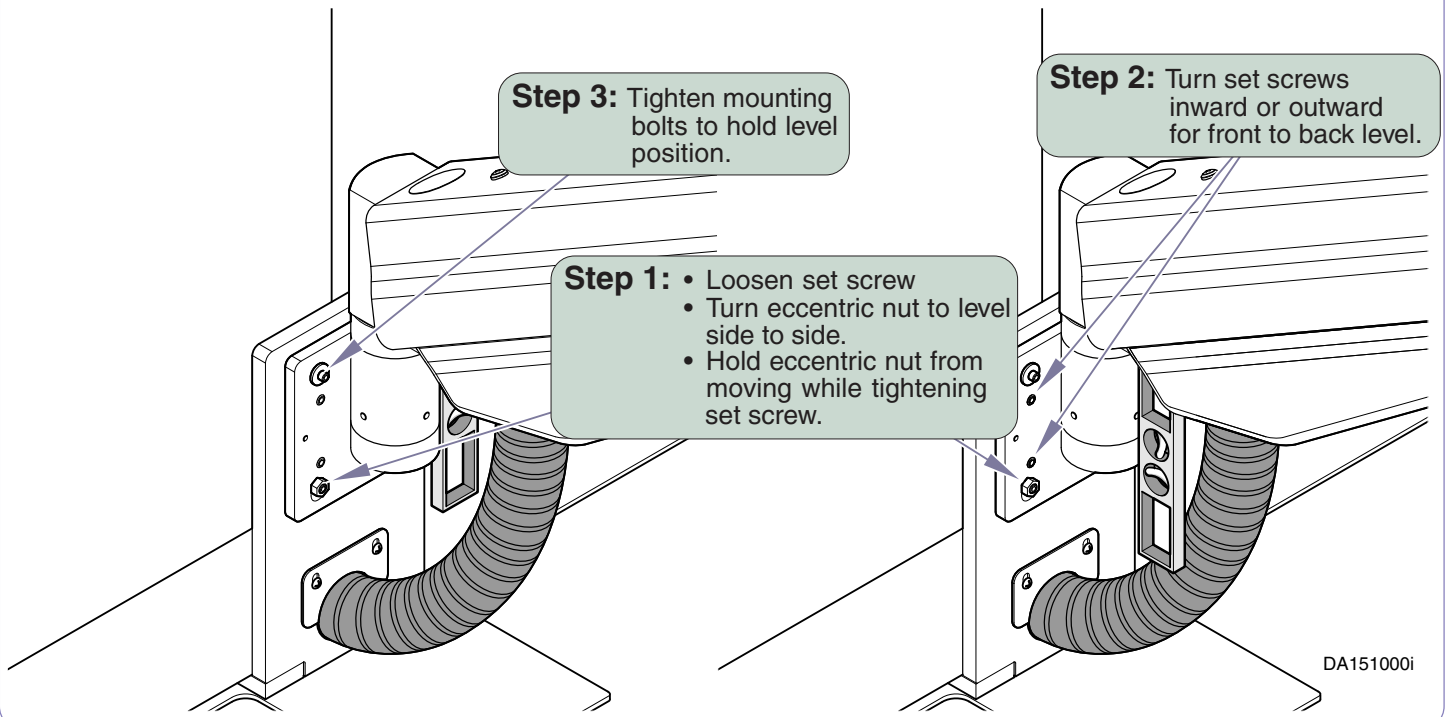
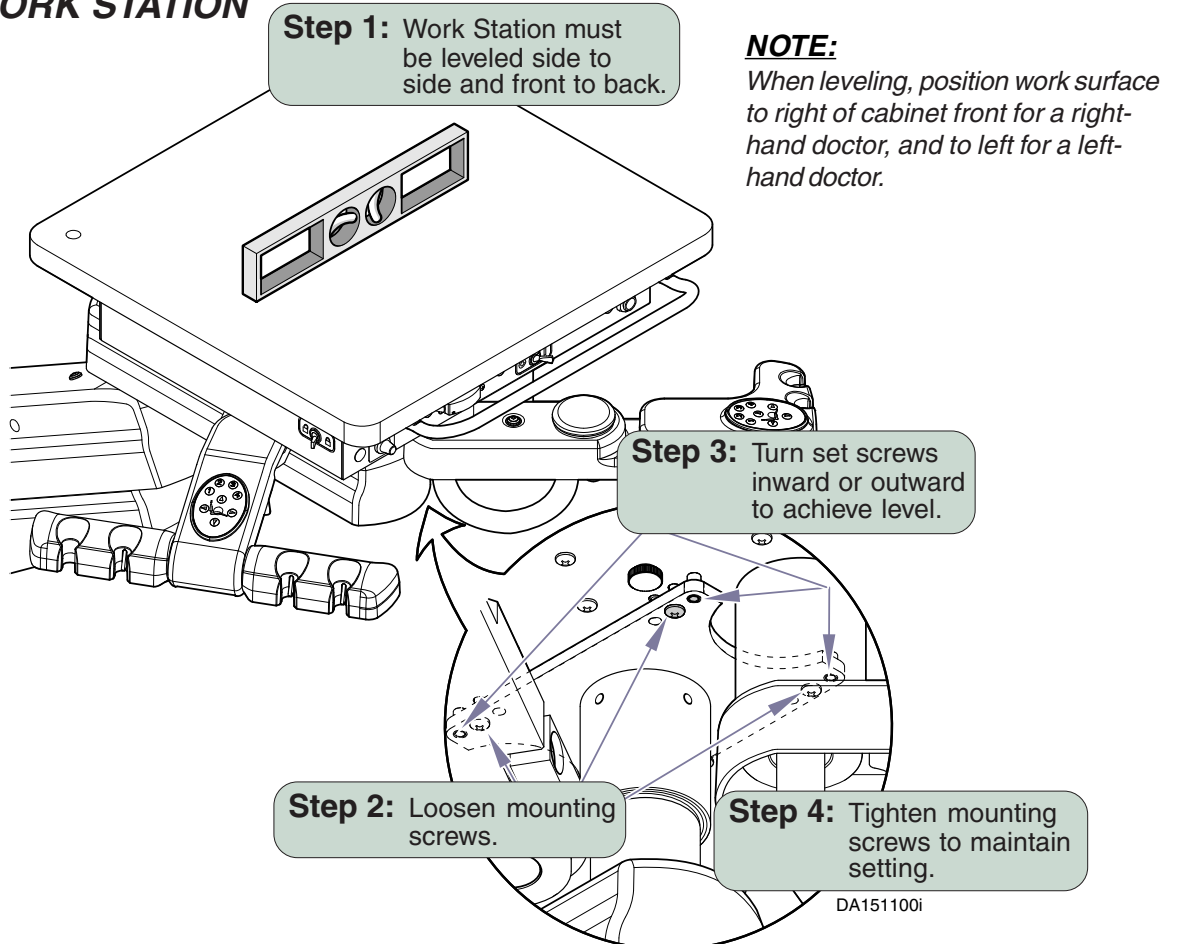


LEVELING FLEX ARM



LEVELING WORK STATION

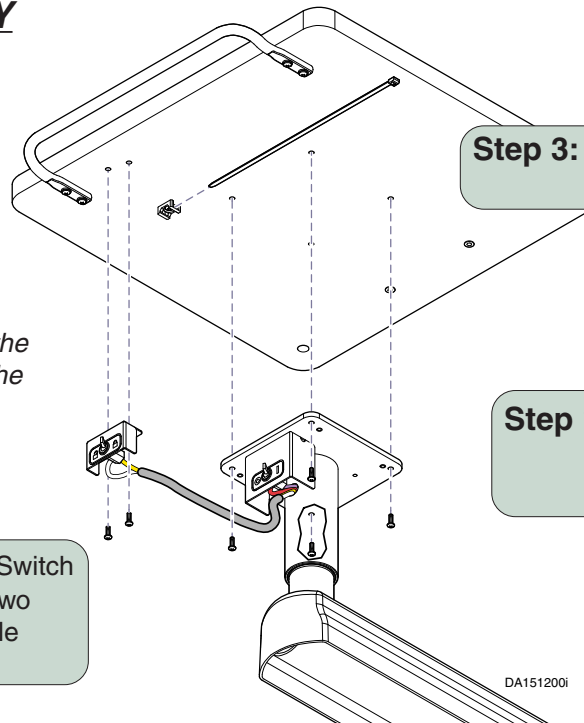


WORK SURFACE ONLY INSTALLATION

NOTE:

Level the Work Surface using the same procedures as leveling the Work Station.

Step 2: Install Flex Lock Switch assembly using two #10 x 5/8 " particle board screws.



Step 3: Secure tubing to cable bracket with cable tie.

Step 1: Position Work Surface in place and secure with four screws.

DA151200i

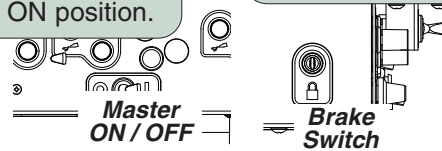
FLEX ARM ADJUSTMENTS

NOTE:

Refer to Flex Tension Adjustment for procedures on adjusting the tension on the Flex Arm.

Step 1: Place Master switch to the ON position.

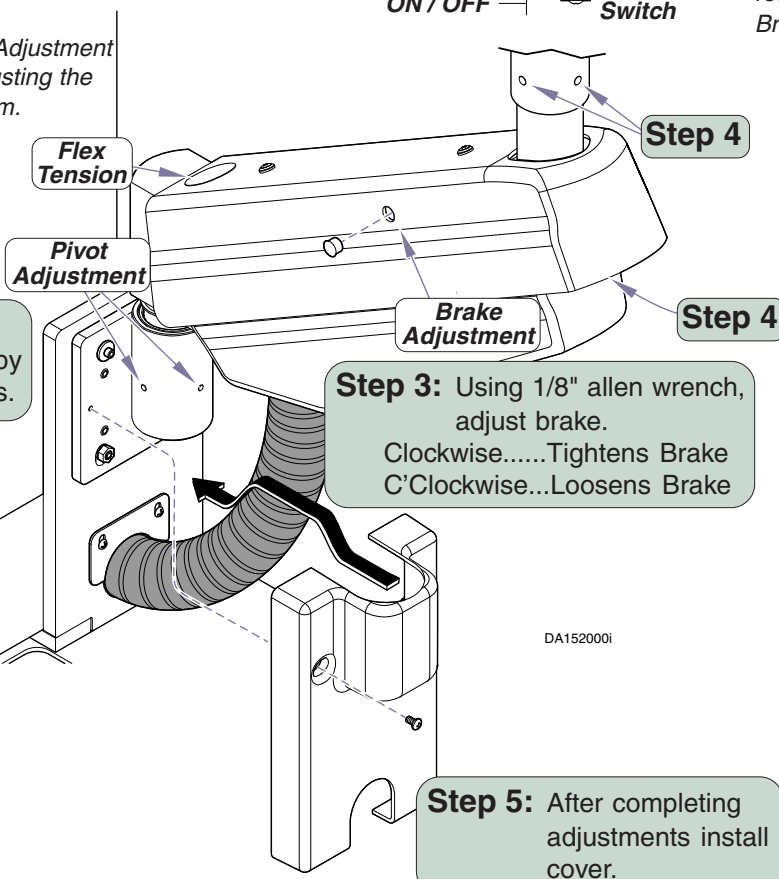
Step 2: Position Brake Switch so the brake is LOCKED.



NOTE:

Work Station should retain position when Brake is LOCKED.

Step 4: Adjust amount of drag at all pivots by turning set screws.

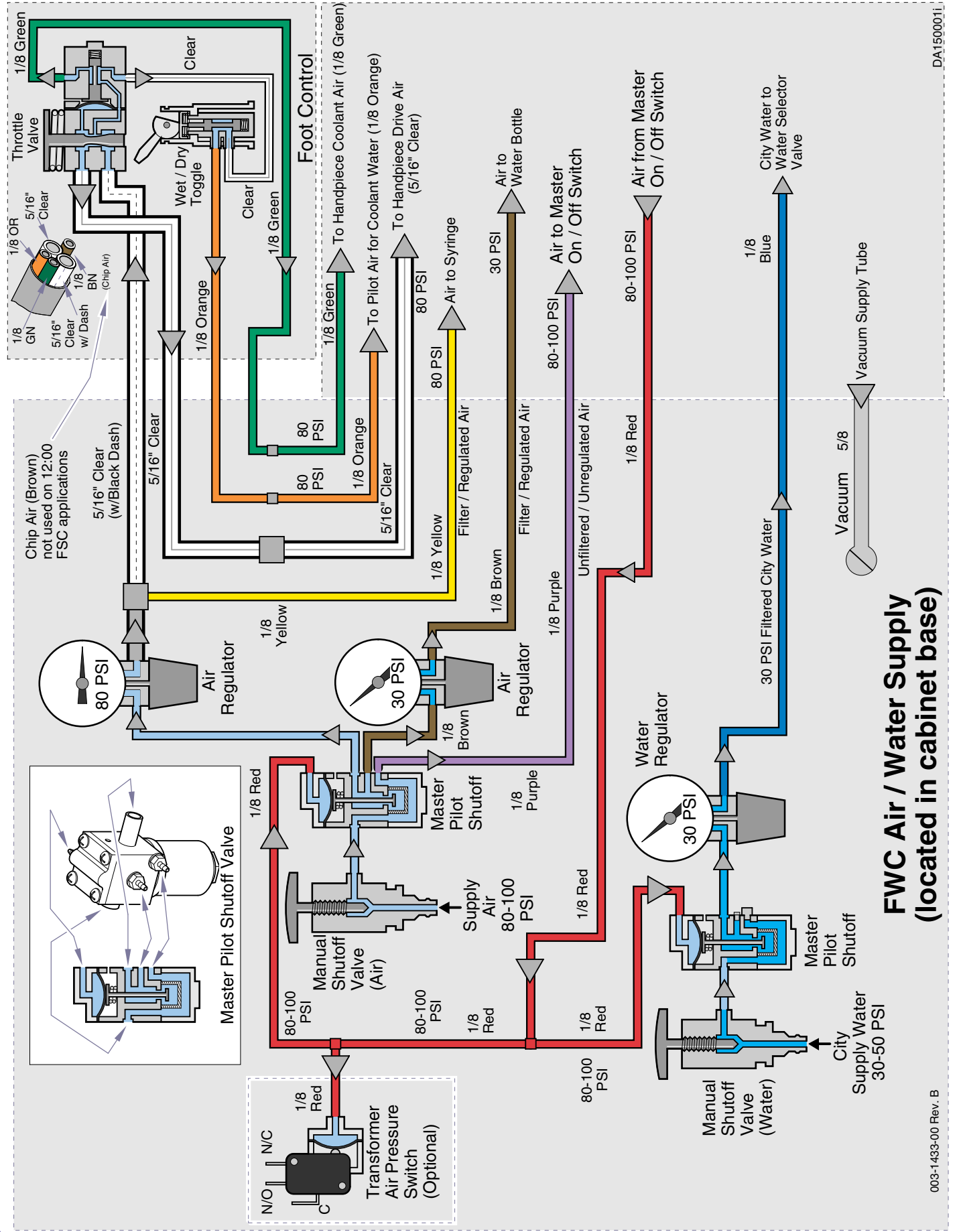


Step 3: Using 1/8" allen wrench, adjust brake.
Clockwise.....Tightens Brake
C'Clockwise...Loosens Brake

Step 5: After completing adjustments install cover.

DA152000i

TUBING CONNECTIONS.

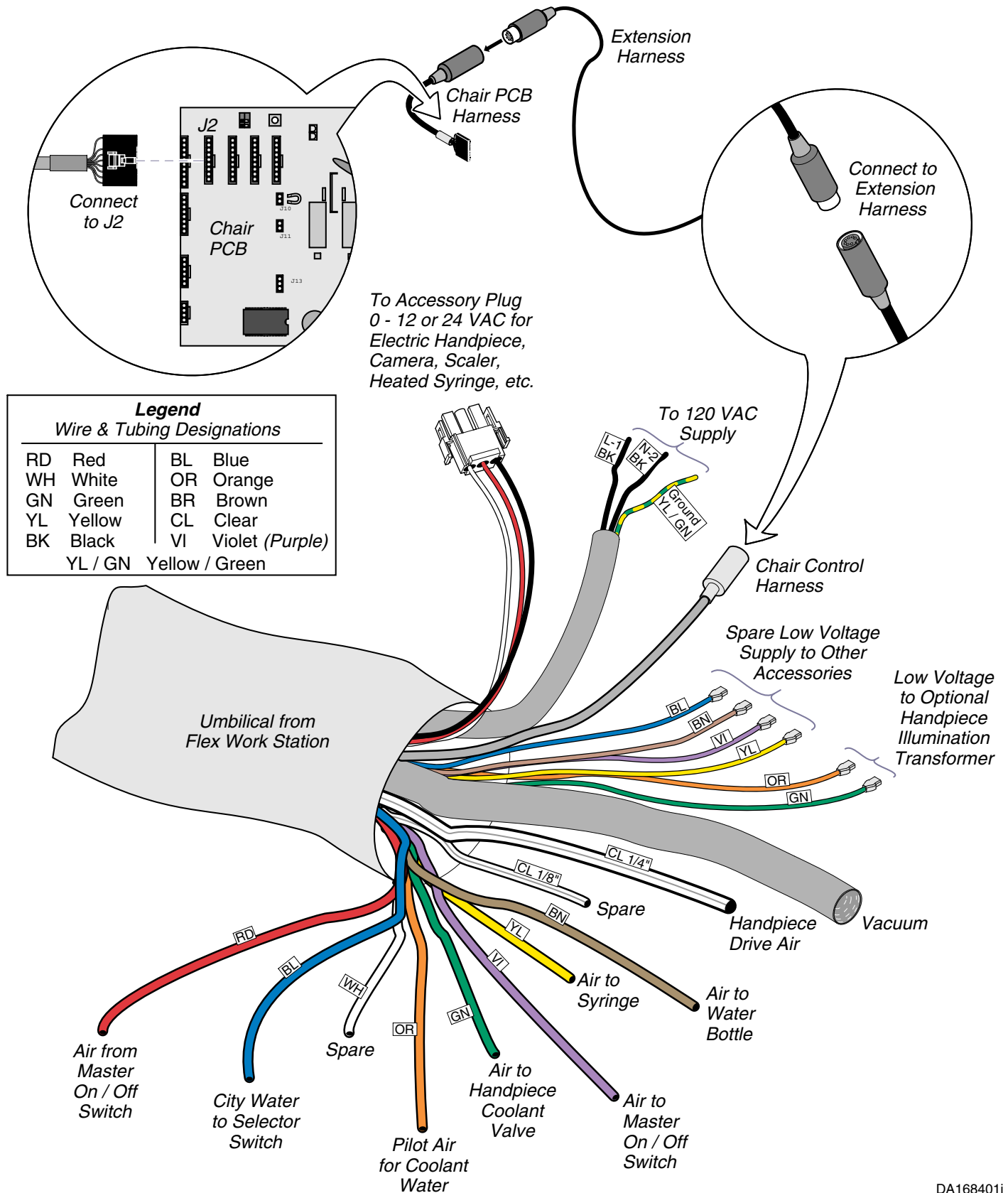


**FWC Air / Water Supply
(located in cabinet base)**

003-1433-00 Rev. B

DA15000.i

ELECTRICAL CONNECTIONS.



DA168401i

TUBING CONNECTORS

When connecting internal tubing to metal barbed fittings during installation, it is necessary to use the plastic retainers included with operatory components.

NOTE:

For 1/8" tubing use Uni-Clamps

For 1/4" tubing use Sleeves

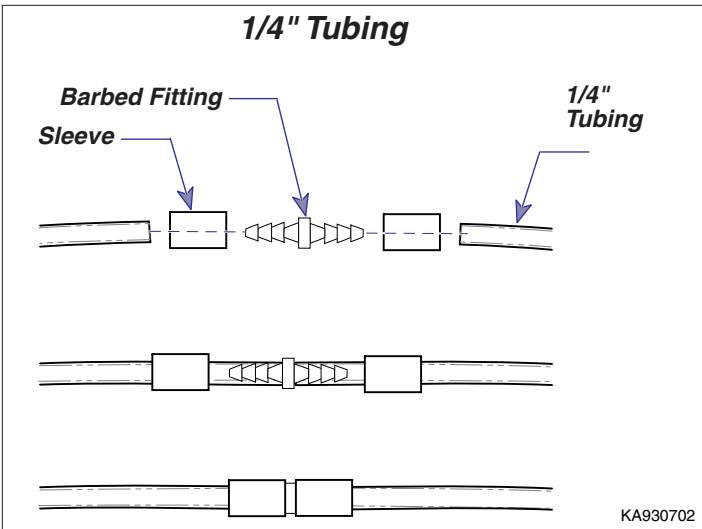
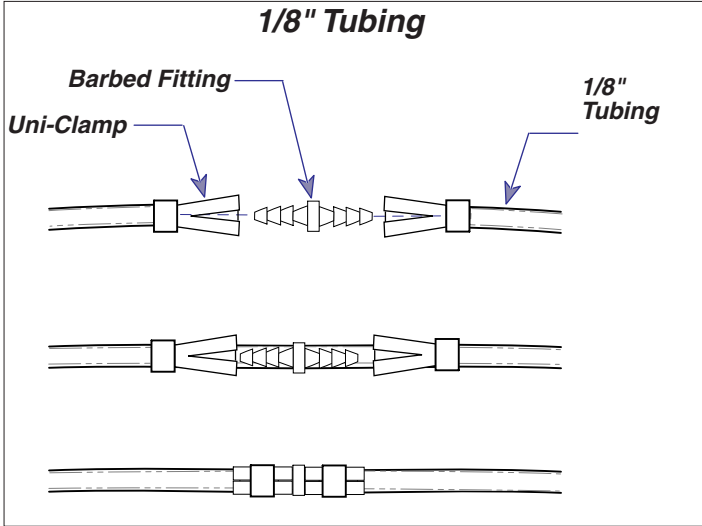
RECOMMENDED PRESSURE SETTINGS

- City Water Regulator Valve 30 PSI
(2.1k/c²)
- Air Regulator Valve 80 PSI
(5.6 k/c²)
- Water Bottle Regulator Valve 30 PSI
(2.1k/c²)

WEIGHT LIMITATIONS

Maximum Load

(On work surface) 40 lbs. (18.1 kg)



KA930702

Midmark Corporation
 60 Vista Drive
 P.O. Box 286
 Versailles, OH 45380-0286
 937-526-3662
 Fax 937-526-5542
 www.midmark.com



Because we care.