

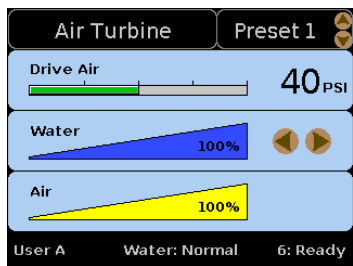
 Home	<p>Home Screen appears when the master switch is turned ON; Icons appear as software communicates with each one.</p> <div style="text-align: center;"> <p style="text-align: center;"> Change User View control software version View Serial Number of Delivery Unit </p> </div> <p>Home screen goes to sleep (black) after a period of inactivity.</p>
Component Icons	
Status Icons	<p>Components operate only when they have a .</p>
User Setup	<p>Press to highlight a listed setup.</p> <p>Press to access the options for the highlighted setup.</p> <p>Highlight and set the active option(s) using the buttons indicated by the helpers on each screen.</p> <p style="text-align: center;">Tip: Look at the helpers, to see which buttons are active for each screen.</p> <div style="text-align: right;"> </div> <p>You can turn the Auto Save Presets ON (<input checked="" type="checkbox"/> = ON (default)) or OFF (<input type="checkbox"/> = OFF).</p> <p>When Auto Save Presets is ON, every control setting you modify is automatically saved to that User/Preset.</p> <p>When Auto Save Presets is OFF, you can change settings repeatedly without saving them, to that User/Preset, or you can respond to the Save prompt to save the new setting.</p> <p>OR highlight Exit and press to return home.</p>

Programming Chair Positions <p style="text-align: center;">Position Buttons</p>	<p>Use and buttons on any control device to move chair into desired position.</p> <p>Press and hold a position button (1 2 3 or 4) for two seconds.</p> <p>Listen for chair to beep three times. (Indicates current position is programmed to button.)</p> <p>Use and buttons to move chair into a different position.</p> <p>Press the position button you just programmed and verify that chair moves there.</p> <p>Note: Each user can program their own set of programmed chair positions. Always observe the <u>active user</u> on the screen before invoking a programmed position.</p>
--	--

Flush Operations Screens <p style="text-align: center;">Flush Operations Menu</p> <p style="text-align: center;">Flush Selection Screen</p> <p style="text-align: center;">Flush Process Screen</p> <p style="text-align: center;">Flush Complete Screen</p>	How to Use:
	<p>Flush Operations Menu appears when two or more smart handpieces are pulled.</p> <p>Press to highlight an option and press to select.</p> <p>The Flush Selection screen appears.</p> <p>Press to highlight an option and to change the flush time.</p> <p>Press to select/initiate the option.</p> <p>The Flush Process screen appears and indicates the flush operation progress.</p> <p>The Flush Complete screen appears when flush operation is finished.</p> <p>Note: The syringe flush is manual. You must hold the syringe water button down for the entire time displayed on the Flush Process Screen.</p> <p>Press (SELECT) to return to the Flush Selection screen.</p> <p>Use to highlight Exit and press to select.</p> <p>The Flush operations Menu appears.</p> <p>Use to highlight Exit and press to select and return to Home.</p> <p>Note: All handpieces must be returned to holders to exit the flush operation.</p>

Using Smart Handpiece Control Screens:

Air Turbine in Normal Mode



Appears when an Air Turbine handpiece is pulled.
Active controls: *Preset name* and *Water setting*.

In Normal mode:

Press to change active preset, if desired.

Press to change the active setting.

Press to toggle between Normal and Edit modes.

In Edit mode:

(screen not shown)

Helpers and a highlight appear on active controls.

Press to make a different controls setting active.

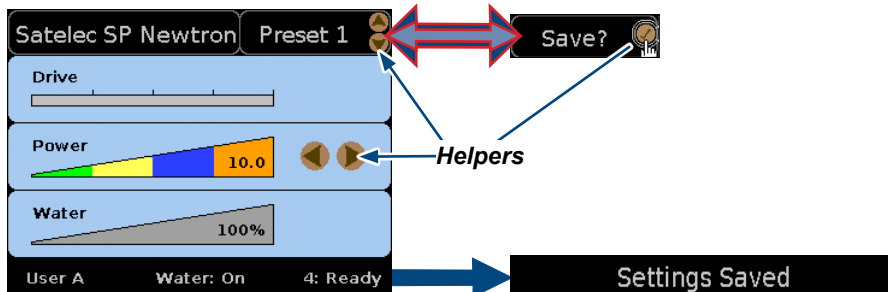
Press to change the active (highlighted) setting.

- When Auto Save is ON, changes made on screen are automatically saved to the Preset shown. See User Setup to see how to turn Auto Save On/Off.
- Press footpedal to operate a pulled handpiece.

Observe water status on screens. Use to toggle the water to Normal (controlled by selector switch on foot control) or On.

Saving control settings when Auto Save Presets are turned off...

- Press and hold (for 2 sec.) as the Preset # alternately flashes to the Save? prompt.
- A message flashes at the bottom of the screen to indicate, Settings Saved, then returns to normal.
- If you do not save the modified settings, the Save? prompt continues to flash.



Note:

The default option is to Auto Save Presets, meaning as soon as you change a setting it automatically saves as the active preset for the active user. Turn the option ON of OFF from the User Setup Menu.

Bien Air Electric Motor Control Screen - EDIT Mode

Appears when a Bien Air handpiece is pulled and is pressed.

Handpiece name

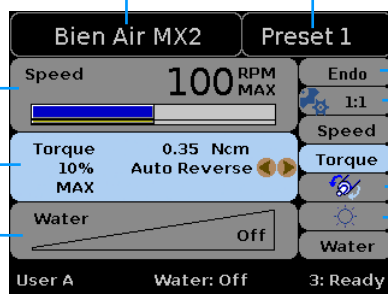
Speed - value shown is max rpm when idle and actual rpm when footpedal is pressed
Blue Bar - indicates speed
Green Bar - indicates torque

Torque

% of maximum Value of torque
Auto Off / Auto Forward / Auto Reverse options
Auto On time - appears only for Auto Forward

Water

Blue fill indicates actual flow **Note: Water is forced OFF in Endo environment.**



Preset name - five presets per user

Oper / Endo - environment toggle

Contra Angle Ratio- color and gear ratio on the screen setting should always match the ratio and color etched on the contra angle being used.

Increasing Direct Reducing

Rotational Direction of motor -
Forward (Blue) Reverse (Red)

Light - toggle
 Light OFF Light ON

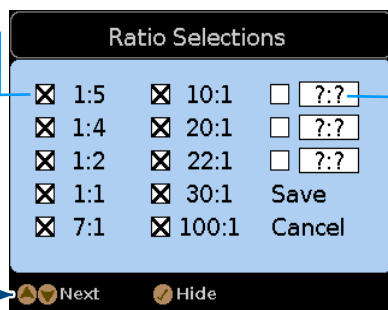
Bien Air Electric Motor - Ratio Selections Screen

appears when in Edit mode 1:1 is active and + are pressed.

View and choose ratios to display

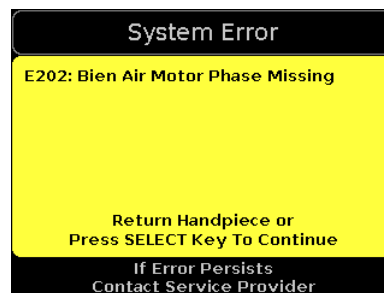
Ratios with an X are the ones that are available from the Contra Angle Ratio options displayed in edit mode.

Add a custom ratio



Helpers

Error Screen



Appears when an error is detected. Follow instructions on screen. If the error is specific to one handpiece, operation of other handpieces should not be affected.

Software Version
v1.2.x